

## Medina medication bins



These compartmented medication bins are specifically used for medication distribution in Medicart Roller Shutters. They are subdivided for the various administration moments.

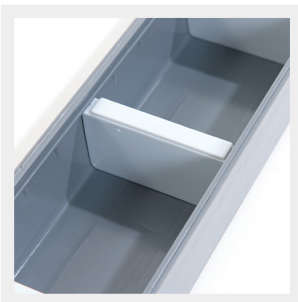
Thanks to the sliding and transparent lid, the medication remains in the correct compartment during transport. This avoids mistakes.

With compartmentalized medication bins, one can be provided per patient with several administration times per day.



### » Labeling

On the front of the handle there is space to place a label. The various dividers indicate the application time.



### » Easy to subdivide

The trays are equipped with a sliding system in which the dividers fit. The dividers are continuously adjustable so that the trays can be optimally subdivided per application time.



### » Modular use

The tray has a size of 24 x 16 inch so that it not only fits in the Medicart Roller Shutter, but also in other ISO modular cabinets or racks. It is possible to place 8 trays per tray.

## » Medina medication bins



### » Medina tray with 8 bins

| Article Number | Number of bins / tray | Ext. Dimensions |
|----------------|-----------------------|-----------------|
| 15011 00061    | 8                     | 24 x 16 inch    |



### » Medina tray without bins

| Article Number | Ext. Dimensions |
|----------------|-----------------|
| 15011 00053    | 24 x 16 inch    |



### » Medina medication bin with 3 subdivisions

| Article Number | Ext. Dimensions   |
|----------------|---|
| 15011 00054    | 2 <sup>1</sup> / <sub>2</sub> x 15 <sup>1</sup> / <sub>4</sub> x 1 <sup>1</sup> / <sub>2</sub> inch |